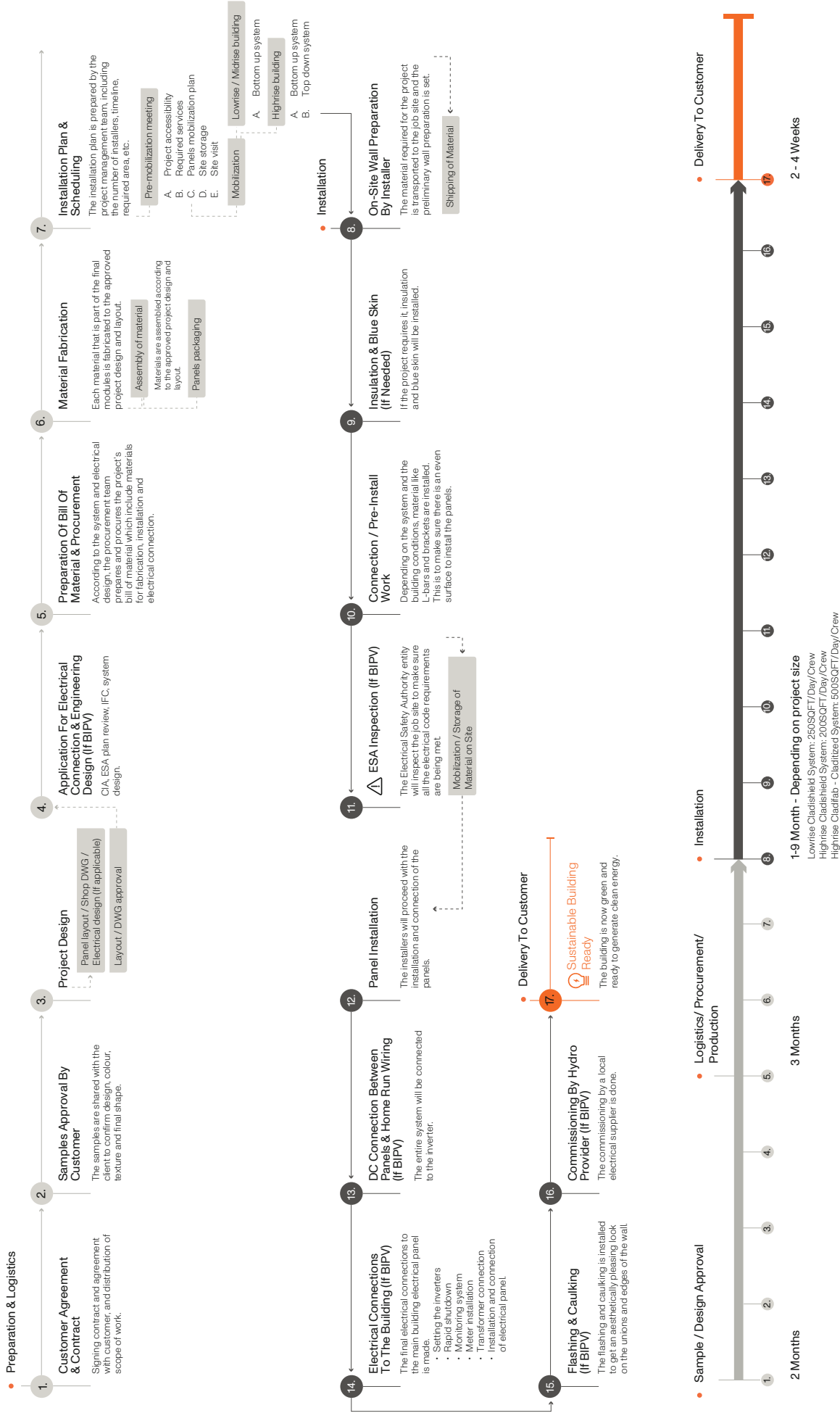


Installation Logistics For
Facade:
CladiShield System



mitrex.com - cladify.com

Project Journey Summary



CladiShield System Installation Logistics

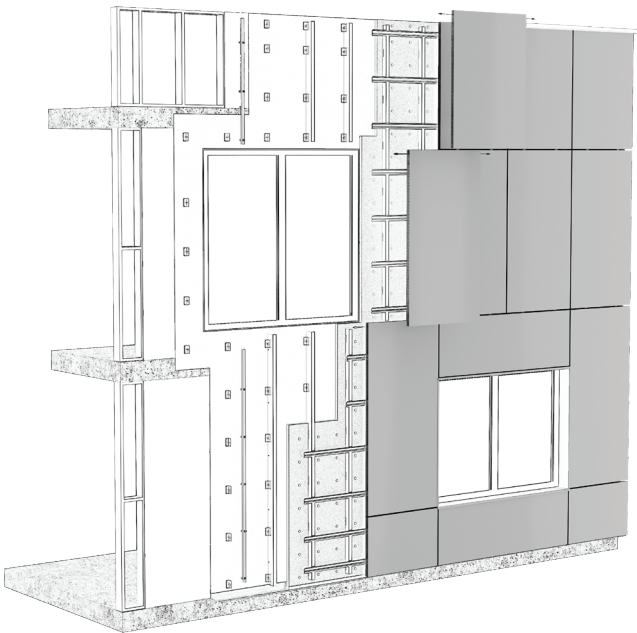
As the global demand for renewable energy and sustainable building material continues to rise, sustainable facades stands at the forefront of green solutions.

The buildings and its vertical surfaces, offer an excellent opportunity to harness the power of the sun efficiently. The successful integration of Mitrex & Cladify materials in such structures requires a meticulous approach to their on-site unloading, on-site transportation and installation.

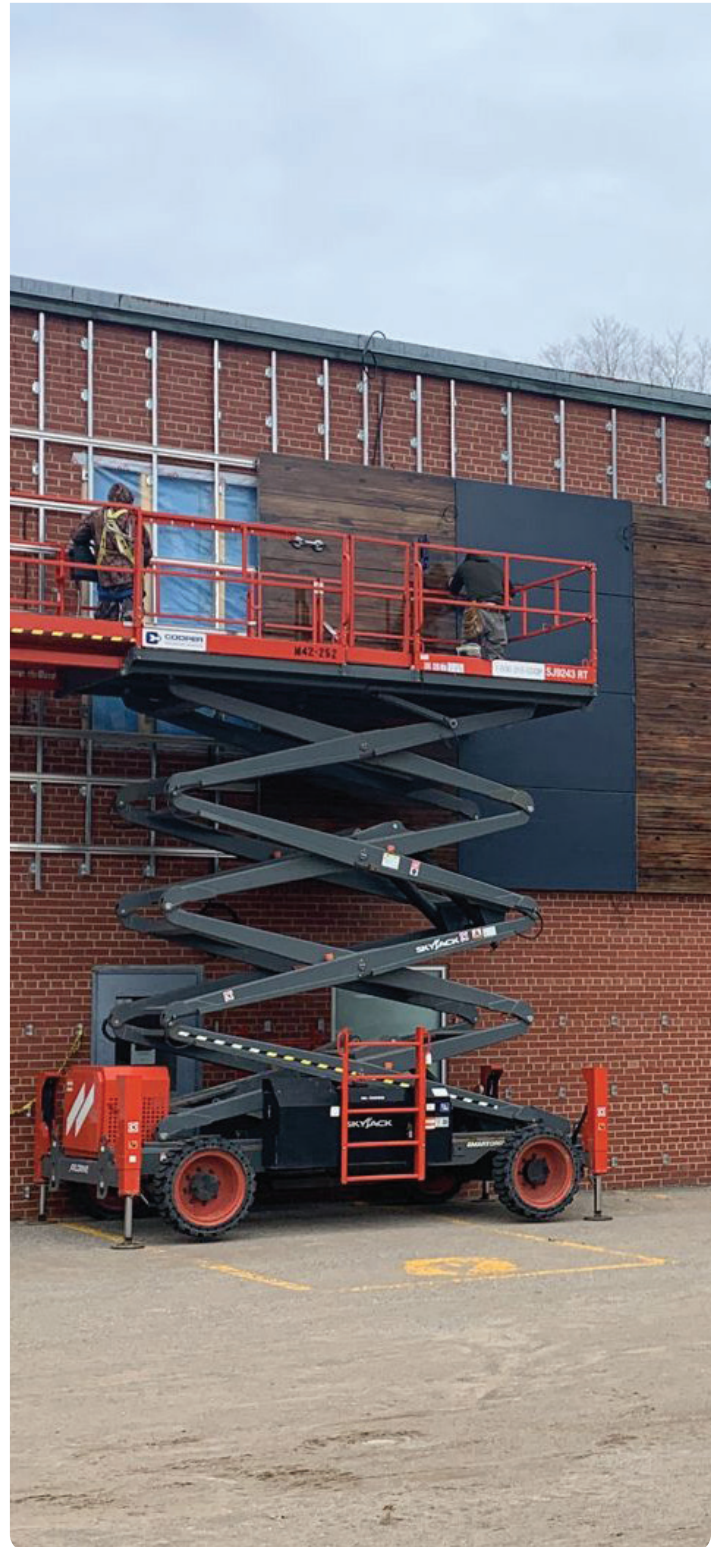
This document aims to outline a comprehensive strategy for the smooth and effective on-site unloading, on-site transportation, and installation of Mitrex & Cladify sustainable facade modules in low-rise and midrise buildings for CladiShield installation system.

By addressing key considerations and best practices in each stage of the process, we aim to ensure a seamless and safe deployment of systems that maximize energy generation and conservation contributing to the sustainable future of urban landscapes.

- CladiShield System (Rainscreen System)



Lowrise & Midrise Building CladiShield System: 250SQFT/Day/Crew



1. Installation Plan And Scheduling

The installation plan is prepared in the Pre-Mobilization Meeting and it covers the following information:

- A. Project accessibility:** ensuring smooth entry and movement within the high-rise building during material installation.
- B. Required services:** such as electrical connections (for BIPV) and utility elevators, essential for supporting the project's successful implementation
- C. Panels mobilization plan:** detailing efficient movement routes and handling procedures within the building premises.
- D. Site storage:** to protect materials from damage and adverse weather conditions.
- E. Site visit:** inspections are highlighted as crucial steps to assess building conditions, identify risks, and foster effective collaboration among stakeholders.

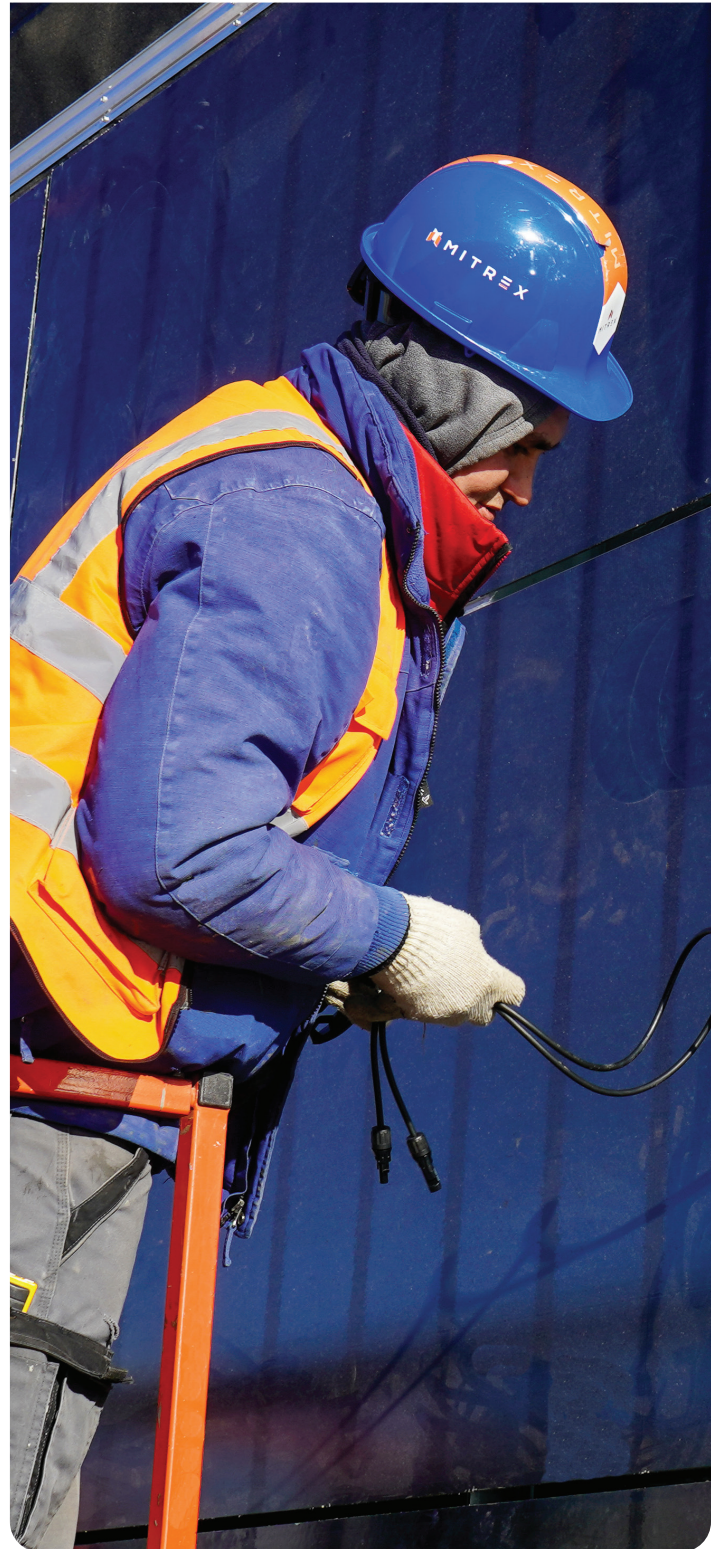
2. On-site Mobilization Options

On-site mobilization strategies are pivotal in ensuring the seamless and timely progression of construction activities while upholding the highest standards of safety and efficiency.

1. Transportation to site on skid or A-Frame depending on warehouse packaging (Please note that Mitrex & Cladify's truck size is 30-50 Ft)
2. Wall preparation
3. Off-loading to designated storage space by using forklift or crane depending on the project needs
4. Horizontal transportation to scissor lift by using pump truck or forklift depending on the project needs
5. Vertical transportation to the module designated space (Based on panel layout)
6. Installation
7. Finishing

Note:

Estimated storage requirement for every 5,000 SQFT of installed area is about 40 × 40 FT.



3. Packaging And Transportation



Box Packaging



Box Packaging



Truck Transportation

Truck size is 30-50 FT

4. On-Site Machinery Required



Scissor Lift

With a raised height of 40' and a large platform workspace– this Scissor Lift will assist our installers during the installation process for quick and easy access.



Forklift (Interior & Exterior)

This forklift will assist our installers to lift, move, and transport the Mitrex material over short distances.

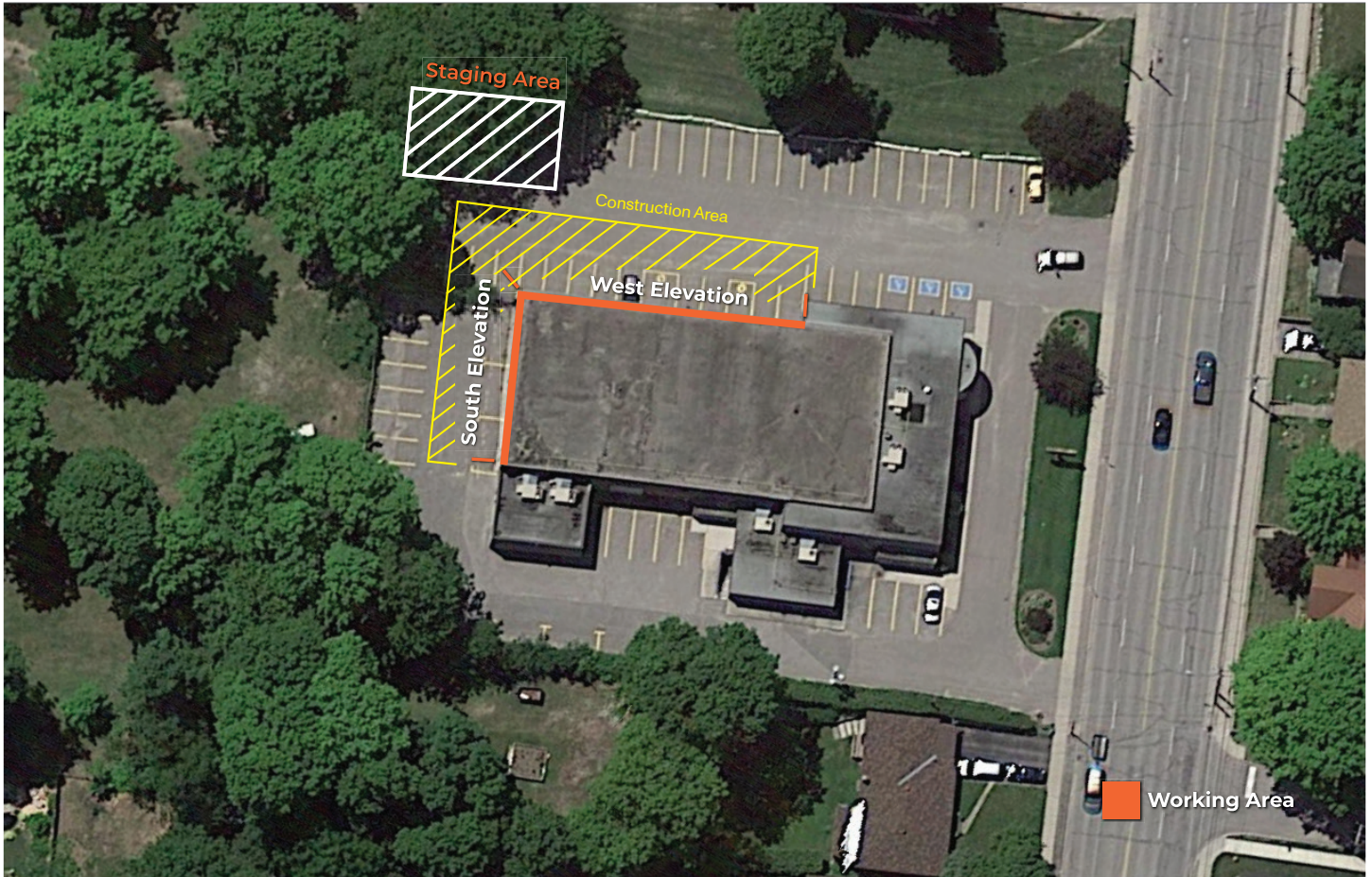


Telehandler

This telehandler will assist our installers to extend and retract a telescopic boom, much like a forklift but with increased reach and versatility. It is used for lifting and placing heavy materials, reaching high elevations.

5. Staging Area Required

Sample of staging area and working space required to complete the project.



• **Toll Free**

+1 (855) 254 0214

• **Learn More**

mitrex.com

info@mitrex.com

cladify.com

info@cladify.com

• **Headquarters**

41 Racine Rd, Toronto, ON M9W2Z4, Canada

+1 (416) 497 7120

• **USA Office**

Chrysler Building, 405 Lexington Avenue Floor 26, New York, USA, 10174

+1 (646) 583 4486