

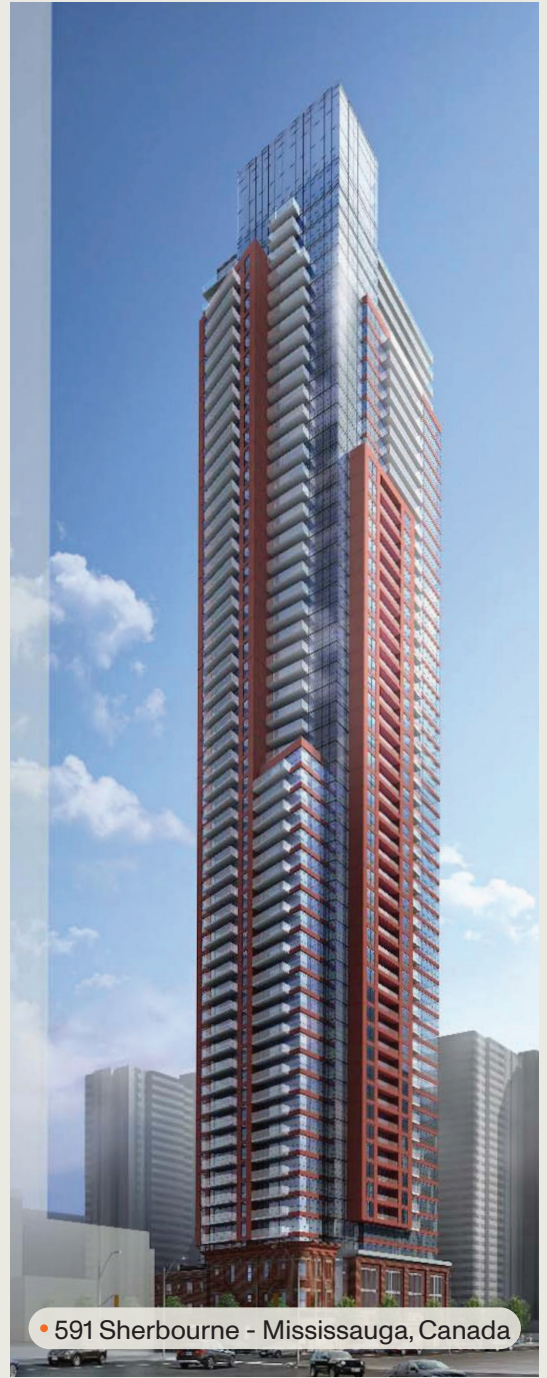


CladiFab Installation System  
Pre-Fab Wall System





• Hyatt House Downtown - Toronto, Canada



• 591 Sherbourne - Mississauga, Canada



• Carrtera Avonhead - Mississauga, Canada

# CladiFab Installation System

## Introduction

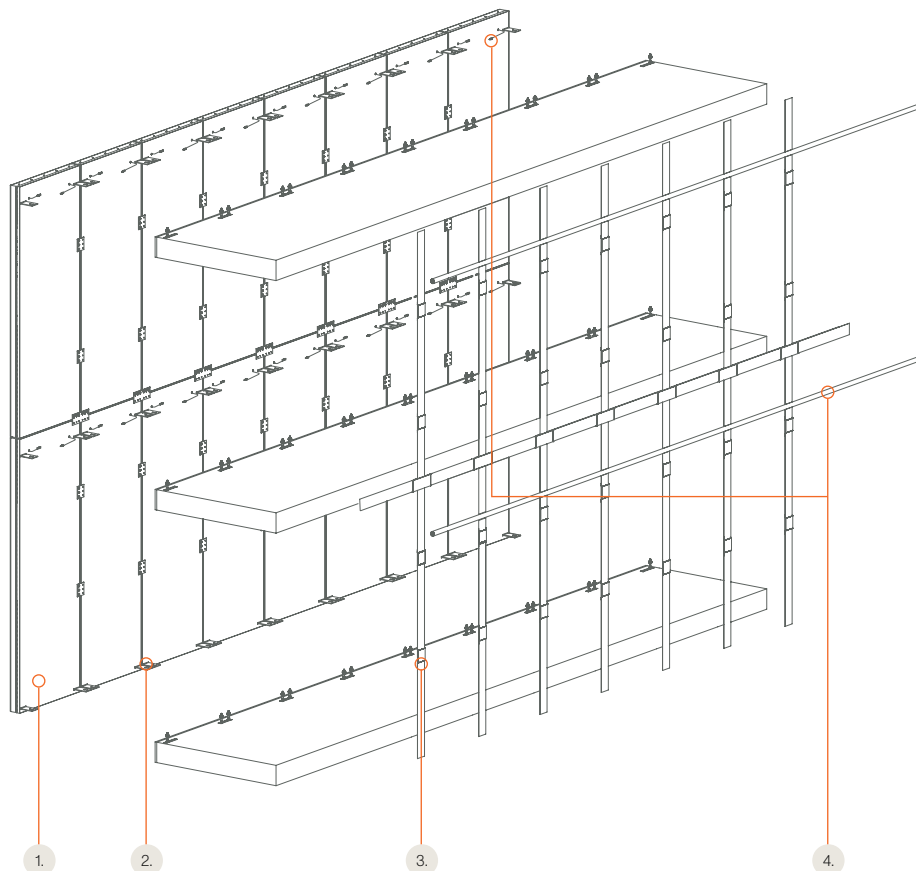
The Mitrex CladiFab System is a construction solution that transforms building exteriors with prefabricated wall panels. Merging efficiency, durability, and eco-friendliness, the CladiFab system simplifies the building process with quick-to-install, lightweight panels. These panels are easy to handle and provide excellent insulation, achieving up to an R-60 rating. They are also remarkably resilient, designed to withstand extreme conditions. With a strong commitment to sustainability, the system uses environmentally friendly materials, making it an ideal choice for modern, eco-conscious construction projects.

- Integrated prefab wall system
- Quick and easy installation
- Lightweight system & reduced structural loads
- Optimal performance with up to R-60
- 3rd party tested to withstand Martian environment

## System Components



• CladiFab System - Components Detail



1. Panel (Customizable Facing, Insulation, Air and Moisture Barrier, Honeycomb Backing)
2. Attachment System
3. Transition Membrane
4. Conduits and Connections

**System Features**

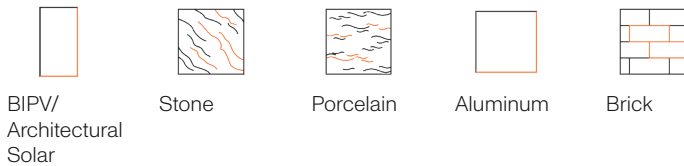
1. Prefabricated wall system
  - Prefabricated wall system with full wall assembly
  - Insulation, AWB, and wall assembly included
  - Installation from inside or out
2. Improved installation
  - Quick installation
  - Slab to slab attachments & structural slabs required
3. Versatile assembly
  - Lightweight system & reduced structural loads
  - Floor to floor panel spans
4. High-performing envelope
  - Fewer connection points
  - Thermal & acoustic insulation
  - Up to R-60
5. Code compliant
  - 3rd party tested and code compliant system.
  - Fire testing including NFPA 285, S134, EN 13501, and more.



• CladiFab System

**Multi-Facing Panels**

Mitrex takes pride in pushing the boundaries of facade technology, offering an unparalleled range of customizable facing options including BIPV, stone, porcelain, brick, and aluminum PVDF.



BIPV/  
Architectural  
Solar

Stone

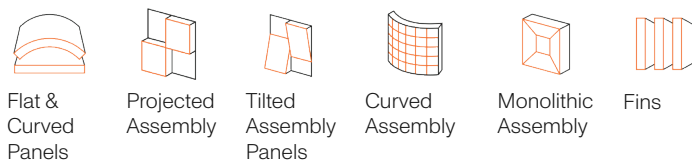
Porcelain

Aluminum

Brick

**Shapes**

Mitrex Solar Facade system is a symphony of versatility and flexibility, harmonizing with the rhythm of modern architecture. It's not just about panels; it's about monolithic architectural elements that breathe life into columns, curve around contours, and stretch across extruded facades. Imagine panels cut at daring angles, high-performing bonding materials, and reinforced with aerospace metal for a seamless, monolithic appearance.



Flat &  
Curved  
Panels

Projected  
Assembly

Tilted  
Assembly  
Panels

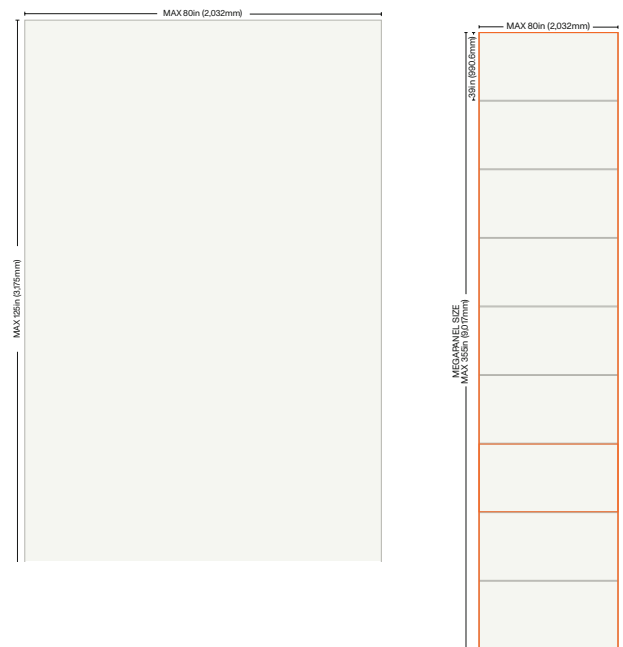
Curved  
Assembly

Monolithic  
Assembly

Fins

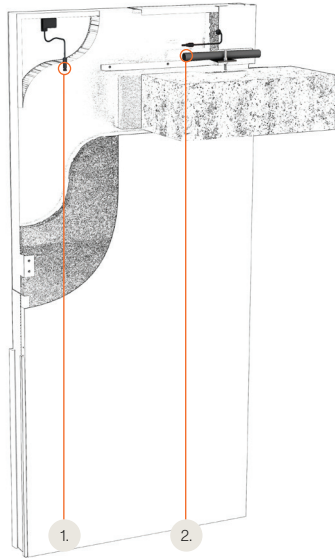
**Sizes**

The CladiFab System offers maximum custom panels measuring 125in x 80in. For larger projects, the system also features maximum pre-assembled panels measuring 355in x 80in. These dimensions ensure seamless integration and efficient installation on various building facades.



**Connection and Wiring**

CladiFab seamlessly integrates BIPV, with all electrical components ingeniously concealed. This system not only strengthens your wall but also energizes it, maintaining aesthetic integrity while harnessing solar power.



1. Module Wiring  
2. Conduit

**Environmental**

CladiFab embodies environmental consciousness by using green technologies and materials to reduce construction's environmental impact. Our approach prioritizes renewable resources, energy-efficient designs, and premium insulation to enhance building performance and lower carbon footprints. Dedicated to sustainability, CladiFab employs eco-friendly production methods, with products that are 96% recyclable, promoting resilient and environmentally friendly structures.

**Quality & Durability**

The CladiFab Installation System is recognized for its top-quality and long-lasting durability. Using high-grade materials and advanced construction techniques, CladiFab is designed to withstand harsh weather, providing consistent performance over time. Our focus on quality is validated by maintaining rigorous quality control standards demonstrated with ISO 9001 compliance. Our commitment to excellence is further validated with ISO 10002 and ISO 10004, ensuring that customer satisfaction and quality management is met.

**Warranty**

The CladiFab installation system comes with a comprehensive 25-year product warranty, covering its use as a building material, and includes a performance warranty ensuring at least 80% of its initial capacity by the 25th year. This extensive warranty provides the assurance of CladiFab's lasting reliability and efficiency, making it suitable for various architectural applications.

**Testing**



Test	Test Description	Result
ASTM E283	Air Leakage Resistance	Qinf – 0.031 cfm/ft <sup>2</sup> or 0.155 L/s-m <sup>2</sup> at 300 Pa; Qexf – 0.024 cfm/ft <sup>2</sup> or 0.122 L/s-m <sup>2</sup> at 300 Pa
ASTM E330	Structural Performance by Uniform Static Air Pressure Difference	Design Load at +/- 80 psf (+/- 3840 Pa), No failure or permanent deformation
ASTM E331	Water Penetration Resistance	No water infiltration at 15 psf or 720 Pa
CAN / ULC S134	Standard Method Fire Test of Exterior Wall Assemblies	Passed
CAN / ULC S135	Standard Test Method for the Determination of Combustibility Parameters of Building Materials Using an Oxygen Consumption Calorimeter (Cone Calorimeter)	Total Heat Release: ≤ 3 MJ/m <sup>2</sup> ; Smoke Extinction Area: ≤ 1.0 m <sup>2</sup> (≤ 0.7 m <sup>2</sup> )
ASTM E84	Tunnel Test	Flame Spread Index: 10; Smoke Developed Index: 200; Class A
CAN / ULC S114	Non-Combustibility in Building Materials	Passed
ASTM E90	Sound Transmission Class	STC Rating 55
EN13501	Fire Classification of Construction Products and Building Elements	Rating: A2-s1,d0

Compare Our Systems

- CladiShield
- Claditized
- CladiFab

System Render



System	✓	✓	✓
<b>Lightweight Panel System</b>	✓	✓	✓
<b>System Type</b>	Rainscreen wall system	Unitized wall system	Prefabricated, complete wall system
<b>Wall Components Included</b>	Insulation, AWB not included	Insulation, AWB, and wall assembly components not included	Insulation, AWB, and wall assembly components included
<b>Air and Water Tight</b>	Air and water tight, and rainscreen principle	Air and water tight	Air and water tight, and rainscreen principle
<b>Insulation &amp; AWB</b>	Continuous insulation and AWB	-	Continuous insulation and AWB
Features			
<b>System Weight</b>	3.16 lb/sq ft	2.63 lb/sq ft	3.19 lb/sq ft
<b>R-Value</b>	Unlimited R-value equivalency	Unlimited R-value equivalency	Maximum R-60
<b>Panel Size</b>	80in x 39in (2032mm x 990mm)	<u>Maximum Custom:</u> 125in x 80in (3175mm x 2032mm)  <u>Maximum Preassembled:</u> 355in x 80in (9017mm x 2032mm)	<u>Maximum Custom:</u> 125in x 80in (3175mm x 2032mm)  <u>Maximum Preassembled:</u> 355in x 80in (9017mm x 2032mm)
Installation			
<b>Sequencing</b>	Structure built, walls and windows built, then panels installed	Structure built, walls and windows built, then panels installed	Structure built, walls and windows built, then panels installed
<b>Installation Speed</b>	-	Quick installation	Quick installation
<b>Installation Capacity</b>	250 Installed SF/Day/Crew	500 Installed SF/Day/Crew	500 Installed SF/Day/Crew

## Compare Our Systems

	• CladiShield	• Claditized	• CladiFab
<b>Installation position</b>	Installation from outside	Installation from inside or outside	Installation from inside or outside
<b>Support required</b>	Backup wall required	Structural slabs required	Structural slabs required
<b>Support Attachment</b>	Attachment to backup wall with subframing	Slab to slab attachment	Slab to slab attachment
<b>Panel Spans</b>	-	Floor to floor panel spans	Floor to floor panel spans
<b>Concealed Fasteners</b>	✓	✓	✓
<b>Design</b>			
<b>Panel Spans</b>	Multi-facing options including BIPV/architectural solar, stone, porcelain, aluminum PVDF, brick veneer	Multi-facing options including BIPV/architectural solar, stone, porcelain, aluminum PVDF, brick veneer	Multi-facing options including BIPV/architectural solar, stone, porcelain, aluminum PVDF, brick veneer
<b>Irregular design capabilities</b>	✓	✓	✓
<b>Performance</b>			
<b>Connection Points</b>	-	Fewer connection points	Fewer connection points
<b>Reduced thermal bridging</b>	✓	✓	✓
<b>Improved acoustic performance</b>	✓	✓	✓
<b>Reduced structural loads</b>	✓	✓	✓
<b>Testing</b>			
<b>3rd party tested</b>	✓	✓	✓
<b>Code-compliant &amp; safety tested</b>	✓	✓	✓
<b>Fire tested</b>	✓	✓	✓

- **Toll Free**

+1 (855) 254 0214

- **Learn More**

[mitrex.com](http://mitrex.com)

[info@mitrex.com](mailto:info@mitrex.com)

- **Headquarters**

41 Racine Rd, Toronto, ON M9W2Z4, Canada

+1 (416) 497 7120

- **USA Office**

Chrysler Building, 405 Lexington Avenue Floor 26, New York, USA, 10174

+1 (646) 583 4486