

Read Before Unpacking



Safety, Handling, and Unpacking:
Mitrex Solar Facade

 **MITREX**[™]
mitrex.com

1. Introduction

This guide ensures the safety and integrity of modules during the unpacking process. **Due to the potential damage on the finish of the material, please follow the specific guidance below for handling and unpacking of the material.**

1.1 General Information

- The following instructions relate to the safety and intended use of PV modules. Failure to comply with any instructions below may result in product damage, physical injury and/or death.

This document contains essential information required for the safety, handling and unpacking of the Mitrex Solar Facade modules. All information described in this document is intellectual property of Mitrex.

Please be aware that there is a serious risk of various types of injury occurring during the unpacking and handling including the risk of electric shock.

1.2 Safety Instructions

- Do not connect or disconnect modules when current from the modules or an external source is present. If any damage occurs, it can result in hazardous electrical situations.
- Always use appropriate Personal Protective Equipment when installing PV modules (Check section 2).
- It is essential to wear protective gloves while handling the module to safe guard against cuts and burns.
- The PV module does not contain any serviceable parts. Do not attempt to modify or repair any part of the module.

WARNING: If modules are stored in an uncontrolled environment, the storage time should be less than 3 months and extra precautions should be taken to prevent connectors from being exposed to moisture or sunlight, like using connector endcaps.

- Perform all work in safe and dry conditions.
- External or artificially concentrated sunlight shall not be directed onto the PV module.
- Do not use or install damaged modules.
- Handle the module in a way that avoids breakage, scratching, bending of the glass and backsheet.
- Keep all connectors clean and dry at all times.
- Do not leave modules unsupported or unsecured.
- Particular care should be taken to avoid module backsheets being damaged by sharp objects, as scratches may directly affect product safety.
- Be aware of sharp edges from the aluminum honeycomb.

1.3 Handling Instructions

- Modules should be stored in a dry and ventilated environment to avoid direct sunlight and moisture.
- Handle the module vertically with honeycomb toward the person.
- Modules must always be handled by two people.
- Do not carry the module by its cables.
- Do not stand, step, walk and / or jump on modules under any circumstances.
- Do not drop or place objects (such as tools) on the modules.
- Do not use sharp instruments on the modules.
- Do not lift modules by their wires or junction box, lift them by the frame.
- Do not place excessive loads on the glass of the module.
- Do not expose the modules and its connectors to any unauthorized chemical substance (e.g. oil, lubricant, pesticide, etc.).
- Mitrex Solar Facade modules are strong, but mishandling may cause damage to the module.
- Avoid subjecting the modules to impact or mechanical flexing.

2. Personal Protective Equipment (PPE)

Before beginning the unpacking and handling the panels, please make sure you are wearing the following PPE:

- Gloves – Cut resistant electrically insulated work gloves.
- Safety Glasses
- Protective clothing (long sleeve)
- Steel-toed shoes with rubber soles
- Hard-hat

3. Unpacking The Modules From Skid

Mitrex modules are carefully packed in packages of 14. Please follow the instructions below for unpacking of the modules for installation.



1. With the help of a knife, carefully cut the plastic film that covers the box. Make sure the pressure in the knife is enough to cut the plastic but not the box.



2. With your hands, remove the plastic film that covers the box.



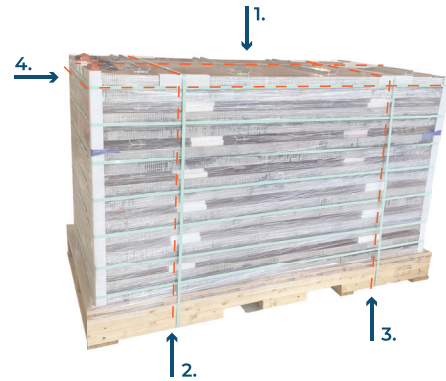
3. Remove the box lid. Put it aside.



4. With a partners help, remove the box that is covering the panels by lifting it. Put it aside.



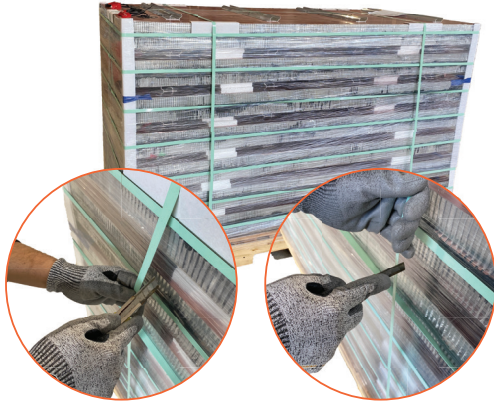
5. The package contains different straps that secure the modules during transportation. Identify the highlighted straps from the image below.



6. With the help of a knife, cut the top strap (1). Make sure you do not cut, scratch or damage the honeycomb or interlocking channel system.



7. Cut the vertical straps (2. and 3.). Make sure you do not cut or damage the honeycomb or glass facing.



8. Cut only the first horizontal strap (4.). Make sure you do not cut or damage the honeycomb or glass facing.



9. Using the protective corner cardboard pieces as support, cut the plastic film at the same height of 2 panels.



10. Remove the first corner piece by pulling the piece downwards. Only remove the corner pieces covering the top 2 panels. Repeat this in the 4 corners.



11. With the help of a partner, lift the first module and place it in a dry and safe place until it's installation. Do the same for the second module. After this, repeat steps 8 to 11 until the skid is empty.



WARNING: The glass facing of the module can be damaged if it is not placed properly. Make sure that if the panel is facing down, there is not any screw or metallic piece that can damage the surface.

4. Unpacking The Modules From A-Frame

Mitrex modules are carefully packed in packages of 6 per A-frame side. Please follow the instructions below for unpacking of the modules for installation.



1. With the help of a knife, carefully cut the plastic film that is covering the modules. Make sure the pressure in the knife is enough to cut the plastic but not to damage the honeycomb or the junction box.



2. With your hands, remove the full plastic film that covers the modules. Put it aside.

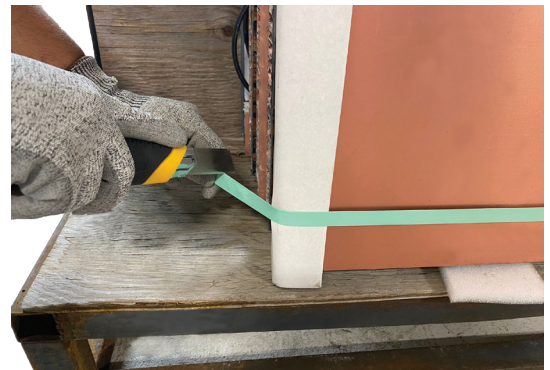
3. Bring a partner.



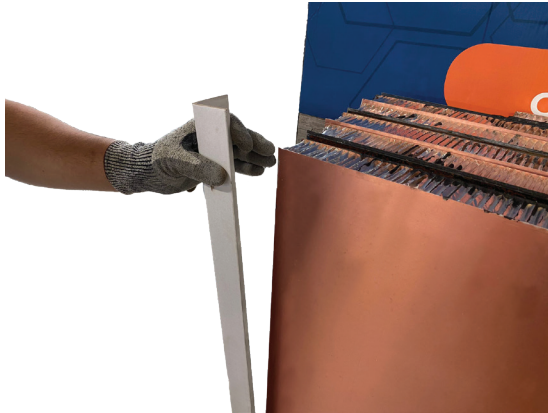
4. While your partner holds the modules, cut the first strap. Make sure the modules are held by your partner at all times during the cutting to ensure the modules do not fall to the floor.



5. Then cut the second strap. Make sure the modules are held by your partner at all times during the cutting to ensure the modules do not fall to the floor.



6. Remove the corner protectors. Put them aside.



7. Bring a third partner. Two of the partners will remove the first module while the third person holds the remaining modules.



8. One by one, lift each remaining module and place it in a dry and safe place until it's installation. Do the same for the remaining modules until the A-frame is empty.



WARNING: The glass facing of the module can be damaged if it is not placed properly. Make sure that if the panel is facing down, there is not any screw or metallic piece that can damage the surface.

5. Limited Warranty

Mitrex provides a 25-year hardware warranty, and we guarantee that after 25 years, the efficiency of the panel will be no less than 80% of the original energy generation.

5.1 Disclaimer

The information presented in this document is subject to change by Mitrex without prior notice. Mitrex gives no warranty of any kind whatsoever, either explicitly or implicitly, with respect to the information herein. In the case of any inconsistency between different language versions, the English version shall overcome and take control in all respects.

5.2 Limitation Of Liability

Mitrex shall not be held responsible for damages of any kind, including – without limitation – bodily harm, injury or damage to property, in connection with handling PV modules, system installation, or compliance or non-compliance with the instructions set forth in this manual.

- **Toll Free**

+1 (855) 254 0214

- **Learn More**

mitrex.com

info@mitrex.com

- **Headquarters**

41 Racine Rd, Toronto, ON M9W2Z4, Canada

+1 (416) 497 7120

- **USA Office**

Chrysler Building, 405 Lexington Avenue Floor 26, New York, USA, 10174

+1 (646) 583 4486