



Energy Generating Building Materials:
eFacade PRO General Product Datasheet



⚡ eFacade PRO

Our range of architectural solar products, including the innovative eFacade PRO, is crafted to seamlessly replace your building’s facade while harnessing the power of the sun.

With a robust aluminum honeycomb core and a layer of high-efficiency solar cells, each panel is a powerhouse of clean energy. But the magic lies in the customizable facing– a canvas where any pattern or colour comes to life, marrying the beauty of architectural solar facades with the practicality of BIPV.

- Assist you with obtaining up to 41 LEED points.
 - Up to R10 per inch.
 - Carbon-negative product life cycle.
 - World’s first fire-tested BIPV.
 - 3rd party tested to withstand Martian environmental conditions.
 - Large format panels that are lighter than water.
- ✓ Mitrex modules include a 25-year warranty for both product quality and performance, guaranteeing excellence in hardware, energy generation, and aesthetics.

Testing And Certifications

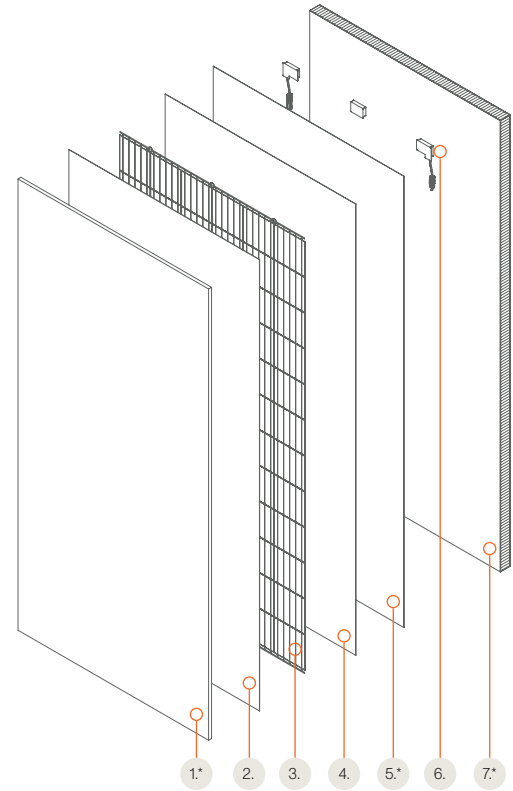


Testing:

- UL 61730-1/-2, CSA 61730-1/-2, IEC 61730-1/-2
- UL 61215-1/-2, CSA 61215-1/-2, IEC 61215-1/-2
- EN 13501-1 (A2-s1, d0)
- ANSI Z97.1

Certifications:

- NFPA 285
- CAN/ULC-S134, CAN/ULC-S135
- ASTM B117-16, ASTM C271/C271M-16, ASTM C297/C297M-16, ASTM C364/C364M-16, ASTM C365, ASTM C393/C393M-16, ASTM C480/C480M-16, ASTM C273/C273M-18, ASTM C481-99 (Reapproved 2016), ASTM C666/C666M-15, ASTM C880/C880M-15, ASTM C897-08 (2016), ASTM D1761, ASTM D7766/D7766M-16
- ISO 10545-8
- ASTM E84, ASTM E136, ASTM E119
- ASTM E283, ASTM E330, ASTM E331
- ASTM E1886, ASTM E1996
- ASTM G154
- ASTM D6578

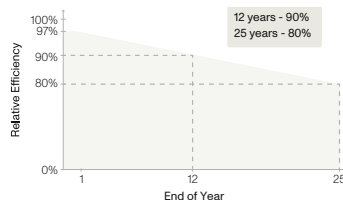


eFacade PRO Module Layers

1. Glass / Customizable Facing - * See page 6, Section Solar Glass Capabilities.
2. and 4. Encapsulant
3. ⚡ Solar Cells
5. Back Sheet - *See page 6, Section Solar Backsheet Capabilities
6. Junction Box
7. Aluminum Honeycomb - * See page 5, Section Aluminum Honeycomb Capabilities

Warranty

Our products are backed by an industry-leading 25-year product and performance warranty.



Product Material Warranty: 25 years
 Performance Warranty: 25 years
 ≥ 97% end of 1st year
 ≥ 90% end of 12th year
 ≥ 80% end of 25th year

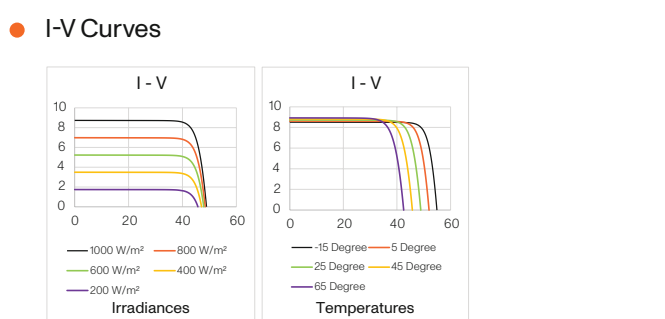
General Electrical And Mechanical Data

For Standard Module 2030×990 (79.9×39.0)

● Test	● Specification	● Engineering Drawing
Test Conditions	STC	
Module Power (Pmax)	Varies, See Page 14-16	
Maximum Power Voltage (Vpmax)	Varies, See Page 14-16	
Maximum Power Current (Ipmax)	Varies, See Page 14-16	
Open Circuit Voltage (Voc)	Varies, See Page 14-16	
Short Circuit Current (Isc)	Varies, See Page 14-16	
Module Efficiency	Varies, See Page 14-16	
Cell Efficiency	22.5% - Monocrystalline Solar Cell	
Maximum System Voltage (VDC)	1000V (IEC/UL)	
Series Fuse Rating	20A	
Power & Other Electrical Specification Tolerance	5%	
Application Classification	Class A	
Measurement Conditions: STC 1000 W/m ² - AM 1.5 - Temperature 25°C		

● Mechanical Properties	● Metric	● Imperial
Module Weight	31kg / 45kg	68lbs / 99lbs
Dimensions (H x L x D)	2030 × 990 × 55mm / 2030 × 990 × 58mm	79.9 × 39.0 × 2.16in / 79.9 × 39.0 × 2.28in
Maximum Surface Load (Wind / Snow)	8000Pa rear load / 8000Pa front load	167.1psf rear load / 167.1psf front load
Design Load	5400Pa rear load / 5400Pa front load	112.7psf rear load / 112.7psf front load
Hail Impact Resistance	ø 25mm at 83 km/h	ø 1in at 51.6 mph
Cells	72 [12×6] Mono-crystalline (158.75 × 158.75mm)	72 [12×6] Mono-crystalline (6.25 × 6.25in)
Glass	3.2mm / 6mm tempered glass, high transmittance, anti-reflective coating	0.125in / 0.23in tempered glass, high transmittance, anti-reflective coating
Cables & Connectors	300mm, 500mm, 1000mm, 1200mm - 4mm ² , 12 AWG (UL), MC4 from Staubli	11.8in, 19.7in, 39.4in, 47.2in - 0.16in ² , 12 AWG (UL) MC4 from Staubli
Backsheet	High durability, UV resistant, PV backsheet	
Back Support	Aluminum Honeycomb	
Bypass Diodes	3 diodes- 30SQ045T (45V max DC blocking voltage, 30A max forward rectified current)	
Junction Box	IP68 rated, TUV and UL certified	
Fire Rating	Spread of Flame A, Burning Brand C	

● Temperature Ratings	
Temperature Coefficient Isc	0.036% /°C
Temperature Coefficient Voc	-0.27% /°C
Temperature Coefficient Pmax	-0.36% /°C
Nominal Module Operating Temperature	45 ± 3°C
Operating Temperature	-40°C ~ +85°C



*Varies, These graphics are based on a 345W panel

Backing Information

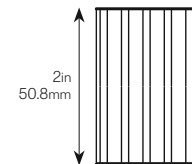
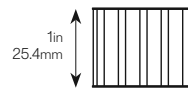
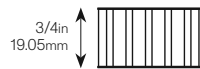
General Panel Mechanical Data

	• Size 3/4 in		• Size 1 in		• Size 2 in	
	Imperial	Metric	Imperial	Metric	Imperial	Metric
0.13in / 3.2mm Glass Facing						
Total Thickness With Facing	0.90in	23mm	1.15in	29mm	2.15in	55mm
Total Weight With Facing	2.81lbs/ft ²	13.74kg/m ²	2.84lbs/ft ²	13.89kg/m ²	2.97lbs/ft ²	14.5kg/m ²
	• Size 3/4 in		• Size 1 in		• Size 2 in	
	Imperial	Metric	Imperial	Metric	Imperial	Metric
0.23in / 6mm Glass Facing						
Total Thickness With Facing	1.00in	25mm	1.25in	32mm	2.25in	57mm
Total Weight With Facing	1.65lbs/ft ²	32kg/m ²	1.90lbs/ft ²	39kg/m ²	2.90lbs/ft ²	64kg/m ²

Aluminum Honeycomb General Mechanical Data

	• Size 3/4 in		• Size 1 in		• Size 2 in	
	Imperial	Metric	Imperial	Metric	Imperial	Metric
Total Thickness	3/4in	19.0mm	1in	25.4mm	2in	50.8mm
Skin Thickness	0.03in	1mm	0.03in	1mm	0.03in	1mm
Weight	0.93lb/ft ²	4.52kg/m ²	0.96lb/ft ²	4.67kg/m ²	1.08lb/ft ²	5.28kg/m ²
Flexural Rigidity	50 (10 ⁹ N psi)	0.35 (10 ⁹ N mm ²)	182 (10 ⁹ N psi)	1.26 (10 ⁹ N mm ²)	1,450 (10 ⁹ N psi)	10.08 (10 ⁹ N mm ²)
Shear Rigidity	332 (10 ⁹ N psi)	2.29 (10 ⁹ N mm ²)	332 (10 ⁹ N psi)	2.29 (10 ⁹ N mm ²)	332 (10 ⁹ N psi)	2.29 (10 ⁹ N mm ²)
Tensile Strength	117 psi	0.80 MPa	196 psi	1.35 MPa	392 psi	2.70 MPa
Compressive Strength	9,398 psi	64.8 MPa	15,664 psi	108 MPa	31,328 psi	216 MPa
Compressive Elastic Modulus	61 psi	0.42 MPa	101 psi	0.7 MPa	203 psi	1.4 MPa
Shear Strength	744 psi	5.13 MPa	1,232 psi	8.5 MPa	2,465 psi	17 MPa

Thickness Options



Aluminum Honeycomb Mechanical Data - Skin

	Imperial	Metric
Thickness	0.02 - 0.04in	0.5 - 1mm
Yield Strength (R _{p,0.2})	>11,603 psi	>80 N/mm ²
Ultimate Tensile Strength (R _m)	18,129<R _m <26,831psi	125<R _m <185 N/mm ²
Elongation (A)	>3%	
Alloy Type	5005	

Aluminum Honeycomb Mechanical Data - Core

	Imperial	Metric
Thickness	1/4in	6.35mm
Yield Strength (R _{p,0.2})	0.002in	0.05mm
Ultimate Tensile Strength (R _m)	3.49lb/ft ³	56 kg/m ³
Elongation (A)	319 psi	2.2 MPa
Alloy Type	3005	

For further mechanical information about aluminum honeycomb, please check Mitrex aluminum honeycomb datasheet.

Facing Information

Solar Glass Mechanical Data

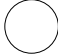

	Imperial	Metric
Thickness (0.13in / 3.2mm)	0.13 ± 0.008in	3.2 ± 0.2mm
Thickness (0.23in / 6mm)	0.23 ± 0.012in	6 ± 0.3mm
Dimensional Tolerance	± 0.04in	± 1.0mm
Density	0.09lbs/in ³	2.5gm/cm ³
Corner	Radius, Chamfer or cut (0.04-0.16in)	Radius, Chamfer or cut (1.0-4.0mm)
Overall Bow / Warp <small>(EN 12150-1:2015)</small>	0.16in / 39.37in	4.0mm/M / 990mm/M
Local Warp <small>(EN 12150-1:2015)</small>	0.002in / 11.81in	0.5mm / 300mm/M
Bending Strength <small>(EN 12150-1:2015) (0.13in / 3.2mm)</small>	516.06lbs/in	90N/mm
Bending Strength <small>(EN 12150-1:2015) (0.23in / 6mm)</small>	685.21lbs/in	120N/mm
Iron Content (ASS)	<120ppm	
Edge	At least seamed	
Scratch Hardness (Mohs)	5	
Fragmented Particles in 50x50mm <small>(If Tempered) (EN 12150-1:2015)</small>	Min 40 pcs	

Solar Glass Facing Specification

	Certification	Imperial	Metric
Density	ASTM C729	158lb/ft ³	2,530kg/m ³
Absorption By Wt.	ASTM C373	0%	0%
Compressive Strength	-	150,000psi	1,000MPa
Flexural Strength (Dry)	ASTM C158	8,700psi	60MPa
Modulus Rupture	ASTM C158	5,950psi	41MPa
Hardness	ASTM C730	570KHN	

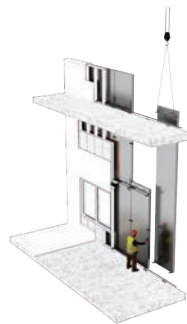
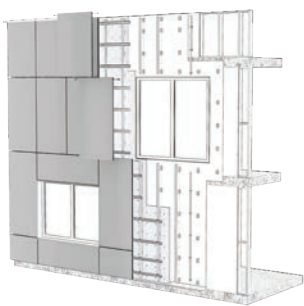
For further mechanical information about solar glass, please check Mitrex solar glass datasheet.

Solar Backsheet Capabilities

Backsheet	High durability, UV resistant, PV backsheet	
Colour	 White Backsheet	 Black Backsheet

System Information

- Cladishield System (Rainscreen System)
- Claditized System (Unitized Wall System)
- Cladifab System (Pre-fab Wall System)



Smoke And Flame Spread (ASTM E84)

	Rating
Mitrex Cladishield System (Rainscreen System)	Class A
Mitrex Claditized System (Unitized Wall System)	Class A
Mitrex Cladifab System (Pre-fab Wall System)	Class A

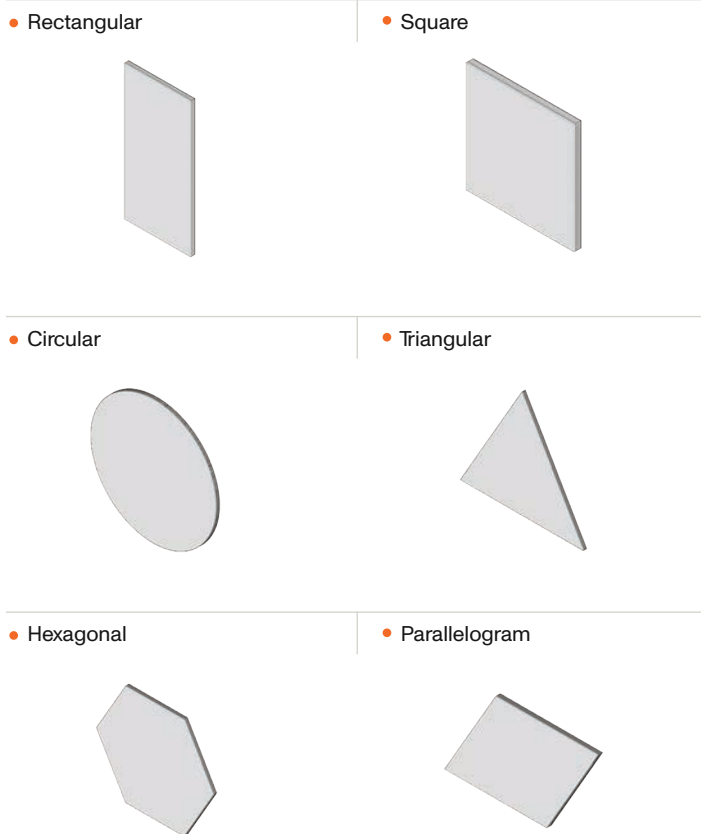
Sound Transmission Coefficient (ASTM E90)

	STC Rating
Mitrex Cladishield System (Rainscreen System)	34
Mitrex Claditized System (Unitized Wall System)	35
Mitrex Cladifab System (Pre-fab Wall System)	55

Color, Shape, And Size Information

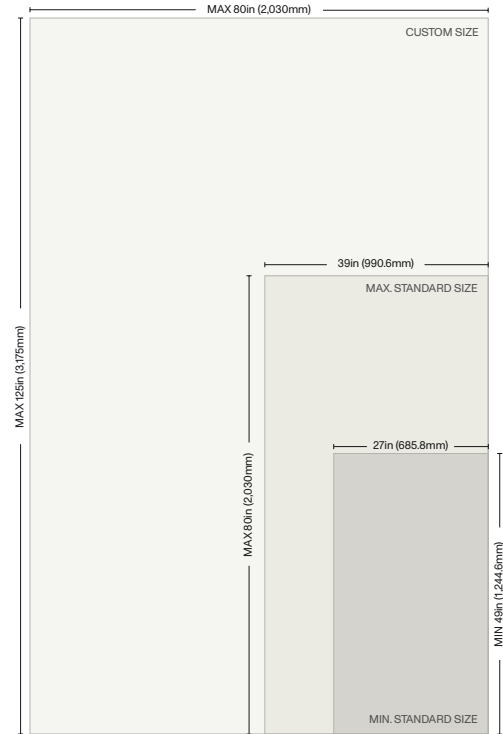
Module Shapes Capabilities

Your building is a mosaic of eFacade PRO panels, each a distinct masterpiece, with options ranging from the elegance of perfect circles to the sharp sophistication of triangles, to hexagons mirroring the precision of nature's honeycombs, and even more shapes that dare to defy convention.



Module Size Capabilities

Mitrex offers eFacade PRO panels in virtually any size. Our standard panel sizes range from 80 in by 39 in. When larger panels are needed, we also offer customized panels that can be a maximum of 125 in by 80 in.



Glass Textures Options

Mitrex has a variety of glass options to give any facade, the desired finish.

- Clear Glass
- Matte Glass
- Satin Glass
- Large Grain Wood Glass
- Fine Grain Wood Glass
- Aqualine Glass
- Granite Glass

Design and Colors

Mitrex offers architects the control and flexibility to design structures sustainably without compromising aesthetics.

- Customizable pattern, texture and colour options to satisfy any architectural needs.
- Reflective, semi-reflective or matte module depending on aesthetic requirements.
- Design flexibility, including size of panels, curves and corners.

For more information, see pages 8 to 12, section Color And Pattern Options.

Standard Solar Solid Colors and Patterns

Mitrex Genesis Series Solar Solid Colors



Icy White
⚡ 5W/SQFT



Polaris
⚡ 9W/SQFT



Ash Beige
⚡ 11W/SQFT



Gravel Grey
⚡ 11W/SQFT



Smokey Grey
⚡ 10W/SQFT



Charcoal Grey
⚡ 10W/SQFT



Navy Blue
⚡ 11W/SQFT



Turquoise
⚡ 7W/SQFT



Peridot
⚡ 5W/SQFT



Dull Yellow
⚡ 6W/SQFT



Dull Orange
⚡ 5W/SQFT



Brown
⚡ 9W/SQFT



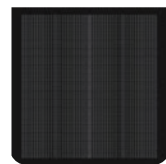
Red
⚡ 9W/SQFT



Pale Rose
⚡ 7W/SQFT



Beige
⚡ 5W/SQFT



Core Black
⚡ 18W/SQFT



Blackout
⚡ 16W/SQFT

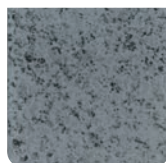
Mitrex Genesis Series Solar Patterns



Arcturus - Limestone
⚡ 12W/SQFT



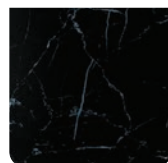
Astra - Limestone
⚡ 11W/SQFT



Moonstone - Granite
⚡ 10W/SQFT



Carbo - Granite
⚡ 15W/SQFT



Orbit - Marble
⚡ 16W/SQFT



Rocksalt - Marble
⚡ 11W/SQFT



Cassia - Metal
⚡ 14W/SQFT



Cobaltic - Metal
⚡ 13W/SQFT

Note: Mitrex Genesis Series colours and patterns are available for power optimization.

Mitrex Exodus Series Solar Solid Colors



Nobel Grey
⚡ 10W/SQFT



Silver Grey
⚡ 10W/SQFT



Ironside Grey
⚡ 13W/SQFT



Monsoon
⚡ 13W/SQFT



Boulder
⚡ 13W/SQFT



Natural Grey
⚡ 13W/SQFT



Iron Filings
⚡ 14W/SQFT



Storm Grey
⚡ 13W/SQFT



Gun Smoke
⚡ 13W/SQFT



Ebony Grey
⚡ 13W/SQFT



Ocean
⚡ 15W/SQFT



Deep Ocean
⚡ 15W/SQFT



Blue Jay
⚡ 14W/SQFT



Sea
⚡ 14W/SQFT



Purple
⚡ 13W/SQFT



Apple Blossom
⚡ 8W/SQFT



Irish Coffee
⚡ 12W/SQFT



Cocoa Bean
⚡ 9W/SQFT



Wet Sand
⚡ 12W/SQFT



Gold
⚡ 11W/SQFT



Espresso Martini
⚡ 10W/SQFT



Storm Dust
⚡ 8W/SQFT



Pine Cone
⚡ 13W/SQFT

Custom Solar Solid Colors



Dark Grey
⚡ 15W/SQFT



Dove Grey
⚡ 14W/SQFT



Concorde Grey
⚡ 14W/SQFT



Dark Beige
⚡ 12W/SQFT



Khaki
⚡ 8W/SQFT



Dark Mustard
⚡ 9W/SQFT


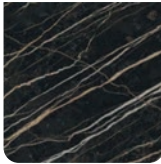
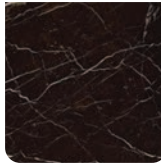
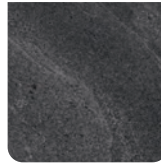
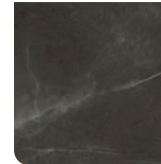

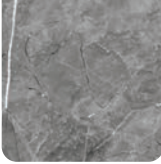



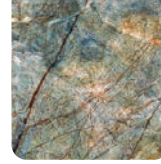

Note: Mitrex Exodus Series colours are NOT available for power optimization.

					
Mustard ⚡ 6W/SQFT	Limunada ⚡ 8W/SQFT	Apache ⚡ 9W/SQFT	Fiery Orange ⚡ 8W/SQFT	Red-Orange ⚡ 9W/SQFT	Cinnabar ⚡ 10W/SQFT
					
Burgundy Red ⚡ 12W/SQFT	Rosy Finch ⚡ 9W/SQFT	Mora ⚡ 9W/SQFT	Dark Blue ⚡ 14W/SQFT	Blue ⚡ 11W/SQFT	Flat Blue ⚡ 11W/SQFT
					
Morpho ⚡ 12W/SQFT	Cool Blue ⚡ 12W/SQFT	Light Blue ⚡ 12W/SQFT	Middle Grey ⚡ 14W/SQFT	Green Boulder ⚡ 11W/SQFT	Green ⚡ 10W/SQFT

More custom colours are available. Ask one of our representatives how to get a sample colour for your project.



Custom Solar Marble

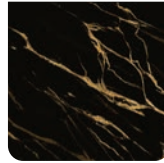
					
Aranea ⚡ 15W/SQFT	Electric ⚡ 15W/SQFT	Emperor ⚡ 14W/SQFT	Magnetic ⚡ 14W/SQFT	Scurro ⚡ 14W/SQFT	Fumo ⚡ 14W/SQFT
					
Hekate ⚡ 11W/SQFT	Quicksilver ⚡ 13W/SQFT	Snowfall ⚡ 12W/SQFT	Oracolo ⚡ 9W/SQFT	Nebula ⚡ 10W/SQFT	Ionian ⚡ 14W/SQFT



Aurora
⚡ 11W/SQFT



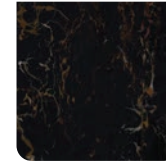
Tramonto
⚡ 14W/SQFT



Venula
⚡ 13W/SQFT



Erda
⚡ 13W/SQFT



Racine
⚡ 15W/SQFT

Custom Solar Limestone



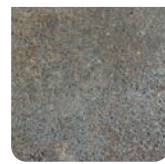
Ancona
⚡ 15W/SQFT



Elara
⚡ 15W/SQFT



Vega
⚡ 14W/SQFT



Lupine
⚡ 14W/SQFT



Selene
⚡ 13W/SQFT



Fennec
⚡ 9W/SQFT



Ursina
⚡ 13W/SQFT

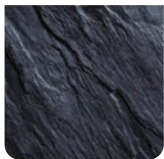


Cygnet
⚡ 15W/SQFT



Saturnian
⚡ 12W/SQFT

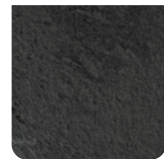
Custom Solar Slate



Striata
⚡ 15W/SQFT



Cerberus
⚡ 16W/SQFT



Corvus
⚡ 14W/SQFT



Orion
⚡ 13W/SQFT



Montanea
⚡ 14W/SQFT

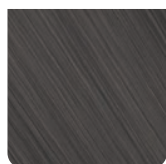


Caldera
⚡ 14W/SQFT

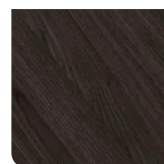
Custom Solar Wood



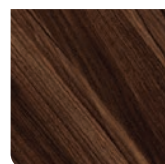
Charbon
⚡ 16W/SQFT



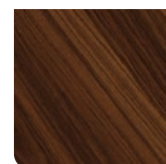
Cinis
⚡ 14W/SQFT



Terra
⚡ 14W/SQFT



Castanea
⚡ 12W/SQFT



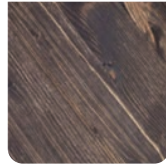
Nocciola
⚡ 12W/SQFT



Sorrel
⚡ 11W/SQFT



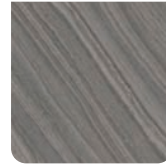
Filigrana
⚡ 13W/SQFT



Bruna
⚡ 9W/SQFT



Mandorla
⚡ 10W/SQFT



Chantilly
⚡ 13W/SQFT

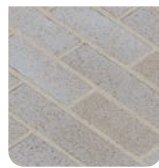
Custom Solar Brick



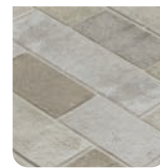
Oscuro
⚡ 15W/SQFT



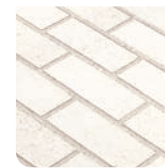
Mercurio
⚡ 10W/SQFT



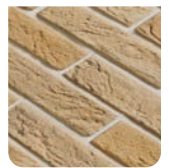
Columba
⚡ 8W/SQFT



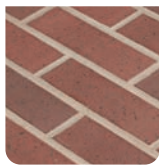
Ardea
⚡ 9W/SQFT



Calcaria
⚡ 10W/SQFT



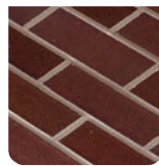
Harena
⚡ 9W/SQFT



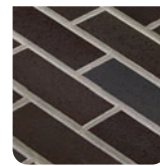
Melograno
⚡ 11W/SQFT



Maris
⚡ 14W/SQFT



Rubrica
⚡ 12W/SQFT

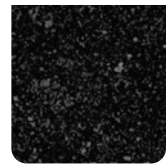


Ferra
⚡ 14W/SQFT

Custom Solar Granite



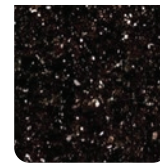
Angola
⚡ 12W/SQFT



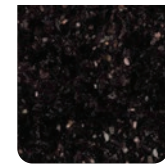
Sagittarius
⚡ 12W/SQFT



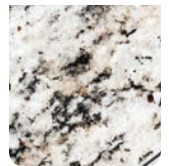
Castan
⚡ 11W/SQFT



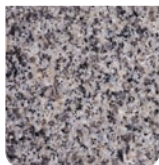
Galaxias
⚡ 12W/SQFT



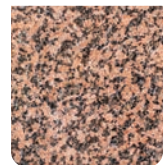
Nero
⚡ 12W/SQFT



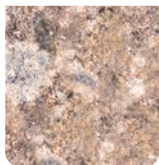
Lunula
⚡ 12W/SQFT



Purpura
⚡ 8W/SQFT



Andromeda
⚡ 7W/SQFT

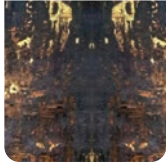


Rosea
⚡ 7W/SQFT



Phoenix
⚡ 8W/SQFT

Custom Solar Metal



Eocene
⚡ 12W/SQFT



Falco
⚡ 12W/SQFT

Note: The power for Mitrex eFacade PRO Modules exhibits a tolerance of +/-5%, indicating that variations in power output within this range are considered acceptable.

Colour/Power Optimization

In custom projects, Mitrex can also implement different strategies that will allow the improvement of the module power outcome depending on the projects needs.

Sample Colour Selected



Rosy Finch
⚡ 9W/SQFT

Note: Due to inconsistencies such as monitors, digital photography and production variations, we cannot guarantee that the color you see on your screen accurately portrays the true color of the product. The finished product may be slightly different than it appears in this chart. We recommend purchasing a sample first.

Before Optimization



After Optimization



⚡ 9W/SQFT

Approx. 30%

⚡ 12W/SQFT

Note: Power outcome is for a 2030x990mm module. Other module sizes will affect the output.



• University of Toronto - SAMIH



• 1451 Wellington St.



• Mayfair Manor



Electrical Data

● Model Name	● Module Power (W/SF)	● Max. Power Current - I _{max} (A)	● Max. Power Voltage - V _{max} (V)	● Short Circuit Current - I _{sc} (A)	● Open Circuit Current - V _{oc} (V)	● Module Efficiency (%)
Ancona	15	7.46	42.90	8.89	49.00	16%
Andromeda	7	3.73	40.20	3.89	47.30	7%
Angola	12	6.51	41.50	6.74	48.00	13%
Apache	9	4.50	41.10	4.83	47.70	9%
Apple Blossom	8	4.16	40.90	4.44	47.50	8%
Aranea	15	7.95	40.90	8.34	48.60	16%
Arcturus	12	6.26	42.30	7.36	48.40	13%
Ardea	9	4.78	39.80	5.16	47.70	9%
Ash Beige	11	5.20	40.40	5.45	47.90	11%
Astra	11	6.92	42.60	8.20	48.70	12%
Aurora	11	5.52	41.70	5.91	48.20	11%
Beige	5	2.61	40.30	2.74	46.90	5%
Blackout	16	8.62	40.60	9.07	48.90	17%
Blue	11	6.08	40.30	6.32	48.20	12%
Blue Jay	14	7.59	40.20	7.90	48.50	15%
Boulder	13	6.90	40.60	7.23	48.50	14%
Brown	9	4.62	41.10	4.96	47.70	9%
Bruna	9	4.59	40.30	4.80	47.80	9%
Burgundy Red	12	6.55	40.50	6.84	48.40	13%
Calcaria	10	5.25	40.00	5.71	47.90	10%
Caldera	14	7.36	40.10	7.75	48.40	15%
Carbo	13	6.85	41.60	7.12	48.10	14%
Cassia	14	7.32	41.00	7.74	48.60	15%
Castan	11	5.77	42.50	6.72	48.40	12%
Castanea	12	6.17	40.50	6.52	48.30	12%
Cerberus	16	8.49	40.60	9.06	48.90	17%
Chantilly	13	6.81	40.40	7.11	48.20	14%
Charbon	15	7.95	40.90	8.41	48.70	16%
Charcoal Grey	10	5.43	40.50	5.71	48.00	11%
Cinis	14	7.25	40.60	7.63	48.40	15%
Cinnabar	10	5.32	40.50	5.58	48.00	11%
Cobaltic	13	6.14	40.70	6.49	48.30	14%
Cocoa Bean	9	4.62	41.10	4.96	47.70	9%
Columba	8	4.30	39.60	4.62	47.50	8%
Concorde Grey	14	7.59	40.20	7.90	48.50	15%
Cool Blue	12	6.31	40.40	6.58	48.30	13%
Core Black	18	9.31	41.90	9.97	48.20	19%
Corvus	14	7.36	40.10	7.75	48.40	15%
Cygnat	15	7.46	42.90	8.89	49.00	16%
Dark Beige	12	6.55	40.50	6.84	48.40	13%
Dark Blue	14	7.36	40.10	7.64	48.40	15%
Dark Grey	15	8.04	40.40	8.42	48.70	16%
Dark Mustard	9	4.96	40.30	5.19	47.80	10%
Deep Ocean	15	8.17	40.40	8.55	48.70	16%
Dove Grey	14	7.48	40.10	7.77	48.40	15%

Electrical Data

● Model Name	● Module Power (W/SF)	● Max. Power Current - I _{max} (A)	● Max. Power Voltage - V _{max} (V)	● Short Circuit Current - I _{sc} (A)	● Open Circuit Current - V _{oc} (V)	● Module Efficiency (%)
Dull Orange	5	3.21	40.50	3.39	47.10	6%
Dull Yellow	6	3.21	40.50	3.39	47.10	6%
Ebony Grey	13	7.00	40.70	7.36	48.60	14%
Elara	15	7.46	42.90	8.89	49.00	16%
Electric	15	7.95	40.90	8.34	48.60	16%
Emperor	14	6.99	42.90	7.76	48.70	15%
Eocene	12	6.14	40.70	6.49	48.30	12%
Erda	13	6.56	42.70	7.24	48.50	14%
Espresso Martini	10	5.43	40.50	5.71	48.00	11%
Falco	12	6.14	40.70	6.49	48.30	12%
Fennec	9	4.81	41.60	5.29	47.80	10%
Ferra	14	7.53	40.50	7.95	48.60	15%
Fiery Orange	8	4.16	40.90	4.44	47.50	8%
Filigrana	13	6.81	40.40	7.11	48.20	14%
Flat Blue	11	6.08	40.30	6.32	48.20	12%
Fumo	14	6.89	42.80	7.63	48.60	15%
Galaxias	12	6.10	42.60	7.13	48.50	13%
Gold	11	5.67	40.60	5.97	48.10	11%
Gravel Grey	11	5.97	40.20	6.19	48.10	12%
Green	10	5.32	40.50	5.58	48.00	11%
Green Boulder	11	5.77	40.70	6.10	48.20	12%
Gun Smoke	13	7.00	40.70	7.36	48.60	14%
Harena	9	4.78	39.80	5.16	47.70	9%
Hekate	11	5.86	41.80	6.30	48.30	12%
Icy White	5	3.21	40.50	3.39	47.10	6%
Ionian	14	6.99	42.90	7.76	48.70	15%
Irish Coffee	12	6.44	40.40	6.71	48.30	13%
Iron Filings	14	7.48	40.10	7.77	48.40	15%
Ironside Grey	13	6.67	40.50	6.97	48.40	13%
Khaki	8	4.03	40.90	4.31	47.50	8%
Light Blue	12	6.67	40.50	6.97	48.40	13%
Limunada	8	4.16	40.90	4.44	47.50	8%
Lunula	12	6.10	42.60	7.13	48.50	13%
Lupine	14	6.92	42.60	8.20	48.70	15%
Magnetic	14	6.89	42.80	7.63	48.60	15%
Mandorla	10	5.19	40.50	5.45	48.00	10%
Maris	14	7.53	40.50	7.95	48.60	15%
Melograno	11	5.72	40.20	6.25	48.10	11%
Mercurio	10	5.25	40.00	5.71	47.90	10%
Middle Grey	14	7.71	40.20	8.03	48.50	15%
Monsoon	13	6.77	40.60	7.10	48.50	14%
Montanea	14	7.36	40.10	7.75	48.40	15%
Moonstone	10	5.38	40.90	5.71	48.00	11%
Mora	9	5.07	40.40	5.32	47.90	10%
Morpho	12	6.44	40.40	6.71	48.30	13%

Electrical Data

● Model Name	● Module Power (W/SF)	● Max. Power Current - Imax (A)	● Max. Power Voltage - Vmax (V)	● Short Circuit Current - Isc (A)	● Open Circuit Current - Voc (V)	● Module Efficiency (%)
Mustard	6	3.45	40.60	3.66	47.20	7%
Natural Grey	13	7.00	40.70	7.36	48.60	14%
Navy Blue	11	6.08	40.30	6.32	48.20	12%
Nebula	10	5.41	41.60	5.78	48.10	11%
Nero	12	6.51	41.50	6.74	48.00	13%
Nobel Grey	10	5.20	40.40	5.45	47.90	10%
Nocciola	12	6.17	40.50	6.52	48.30	12%
Ocean	15	7.94	40.30	8.29	48.60	16%
Oracolo	9	4.55	41.80	4.98	47.90	9%
Orbit	15	7.95	40.90	8.34	48.60	16%
Orion	13	7.00	40.00	7.35	48.30	14%
Oscuro	15	7.86	40.70	8.34	48.80	16%
Pale Rose	7	3.45	40.60	3.66	47.20	7%
Peridot	5	3.21	40.50	3.39	47.10	6%
Phoenix	8	4.21	40.40	4.41	47.50	8%
Pine Cone	13	6.77	40.60	7.10	48.50	14%
Polaris	9	4.16	40.90	4.44	47.50	9%
Purple	13	6.90	40.60	7.23	48.50	14%
Purpura	8	4.21	40.40	4.41	47.50	8%
Quicksilver	13	6.46	42.60	7.11	48.40	14%
Racine	15	8.05	41.00	8.47	48.70	16%
Red	9	4.62	41.10	4.96	47.70	9%
Red Orange	9	4.62	41.10	4.96	47.70	9%
Rocksalt	11	5.74	41.80	6.17	48.30	12%
Rosea	7	3.73	40.20	3.89	47.30	7%
Rosy Finch	9	4.96	40.30	5.19	47.80	10%
Rubrica	12	6.51	40.70	6.93	48.30	13%
Sagittarius	12	6.10	42.60	7.13	48.50	13%
Saturnian	12	6.15	42.30	7.22	48.40	13%
Scurro	14	6.89	42.80	7.63	48.60	15%
Sea	14	7.48	40.10	7.77	48.40	15%
Selene	13	6.81	42.60	8.06	48.70	14%
Silver Grey	10	5.43	40.50	5.71	48.00	11%
Smokey Grey	10	5.43	40.50	5.71	48.00	11%
Snowfall	12	6.12	42.50	6.72	48.30	13%
Sorrel	11	5.71	40.30	6.00	48.10	11%
Storm Dust	8	4.26	41.00	4.57	47.60	9%
Storm Grey	13	6.90	40.60	7.23	48.50	14%
Striata	15	8.04	40.40	8.54	48.70	16%
Terra	14	7.39	40.60	7.76	48.40	15%
Tramonto	14	7.37	40.70	7.70	48.40	15%
Turquoise	7	3.68	40.70	3.92	47.30	7%
Ursina	13	6.58	42.50	7.78	48.60	14%
Vega	14	6.92	42.60	8.20	48.70	15%
Venula	13	6.56	42.70	7.24	48.50	14%
Wet Sand	12	6.44	40.40	6.71	48.30	13%

Mitrex and Cladify Projects



- **Toll Free**

+1 (855) 254 0214

- **Learn More**

mitrex.com

info@mitrex.com

- **Headquarters**

41 Racine Rd, Toronto, ON M9W2Z4, Canada

+1 (416) 497 7120

- **USA Office**

Chrysler Building, 405 Lexington Avenue Floor 26, New York, USA, 10174

+1 (646) 583 4486